

Kirkland Alliance of Neighborhoods

Providing Sustainable Services to a Thriving City in a Changing World

June 11, 2018



“The secret of change is to focus all of your energy, not on fighting for the old, but on building the new.”
- Socrates



Providing Sustainable Services to a Thriving City in a Changing World

I. A Thriving City

II. Strategic Anchors

1. Price of Government
2. Community Survey and “Kirkland Quad”
3. Financial Forecast

III. Preliminary Council Budget Priorities

IV. Community Safety Ballot Measures in 2018 and 2020

Accessible

Desirable

Livable

Peaceful
Affordable

Convenience
Balanced-Living

Trees
Clean

Charming
Compassionate

Downtown
Lifestyle
Personality
Taxes
Millennial
Close-Knit
Bikes Cleaner
Mobile Village

Walkable

Vibrant

Waterfront

Urban

Street-car
View

Portland
Bullet-proof
Encompassing

Asphalt-jungle
Neighborhoods

Affordable-housing
Village-within-a-city

Quaint

Kind
Modern
Bike

Safe

Self-sustaining
Balance

Unique

Environmentally-friendly
Kumbayah
Non-bigoted

Recreational

Progressive

Connected

Family

Sustainability
Cohesiveness

Diverse

Relaxing
Treeless
Cohesive

Parking

Green

Comprehensive
Relaxed
Artistic
Sunshine
Human-scale

Subway-Transit
Self-contained
Uncluttered
Open-Space

Public-transportation

Planned
Futuristic
Destination

Energetic
Connection
Less-traffic

Inclusive

No-Affordable-Home
Economics
Constant
Attractive
Homey
Marina

Open
Community
Convenient

Beautiful

Optimized

More-parks
Versatile

Golden-triangle
Welcoming

Diversified
Proximity

Innovative

Pedestrian
Differential
Intercultural

Traffic

Quieter
Lakewview
Exceptional

Vacation-destination

Beautiful

Thriving

Small

Exciting

Golden-triangle
Welcoming

Diversified
Proximity

Resilient
Bright

Transit

Gorgeous
Connections

Autonomous

Healthy

Stay-the-same

Big

Natural

Extension
High-Tech
Dynamic
Anti-Bellevue
Pleasant

Transit

Quieter
Lakewview
Exceptional

Vacation-destination

Beautiful

Thriving

Small

Exciting

Golden-triangle
Welcoming

Diversified
Proximity

Resilient
Bright

Transit

Gorgeous
Connections

Autonomous

Healthy

Stay-the-same

Big

Natural

Extension
High-Tech
Dynamic
Anti-Bellevue
Pleasant

SUMMARY OF DEVELOPMENT ACTIVITY (May 2018)

Status of Development	Residential Projects (Units)	Office Projects (Sq. Ft.)	Commercial Projects (Sq. Ft.)	Institutional Projects (Sq. Ft.)
1. Under Construction	1,101	392,375	369,619	267,000
2. Building Permits Completed; No Construction	43	51,407	41,035	0
3. Building Permit Appl. In Review	1,430	58,445	65,400	0
4. Zoning Permit Approved, No Building Permit Application	277	133,800	18,020	21,430
5. Zoning Permit Appl. Under Review	1,128	12,887	115,250	257,745
6. Projects in Pre-Permit Review	533	231,213	28,635	34,750
TOTAL	4,512	880,127	637,959	580,925

7,600 new residents and 4,500 new employees

There's A Plan For That!



Comprehensive Plan



Cross Kirkland
Corridor Master Plan



Transportation Master
Plan



Juanita Drive Corridor
Plan



Parks, Recreation and
Open Space Plan



Totem Lake Park
Master Plan



Urban Forestry Plan



Parks and Street
Levies



Surface Water Master
Plan



Village at Totem Lake

Lower Mall



Phase 1

- ▶ 273,600 s.f. retail
- ▶ 200 residential units

Phase II

- ▶ 86,800 s.f. retail
- ▶ 650 residential units



Village at Totem Lake



Upper Mall



The Village at Totem Lake

<https://www.thevillageattotemlake.com/>



Kirkland Urban

<http://www.kirklandurban.com/>



Kirkland Urban - corner of 6th & Central



Lennar Apartments



Looking West

- 6,121 s.f. retail
- 340 residential units



Northwest Corner



Lifebridge NE 118th



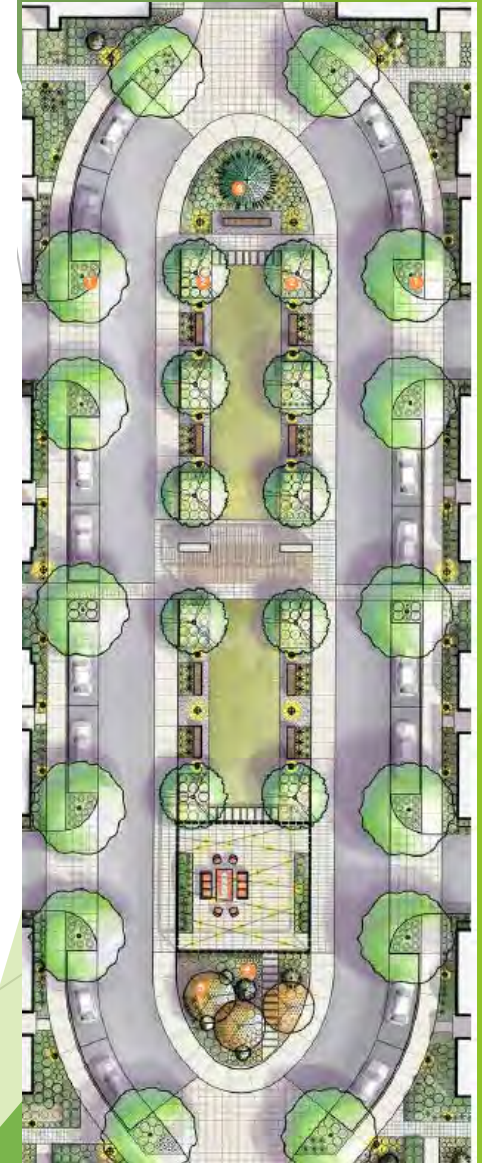
1.) APPROACH FROM THE NORTH ALONG 118th AVE. NE



- 153 senior units
- 409 residential units



Vareze Townhomes



- ▶ Standalone Housing Area
- ▶ 82 Townhouse Units
- ▶ Central Park Area



434 Kirkland Way (MRM)



From Southwest

- 15,500 s.f. retail
- 171 residential units



From Plaza



From East

Voda Apartments (Very Vibrant, Very Voda)



3rd/Park Lane

- ▶ 13,250 s.f. retail
- ▶ 128 residential units



Looking east on Park Lane



Plaza



View from 4th St.

- ▶ 2,450 s.f. retail
- ▶ 10 studios
- ▶ 101 residential suites



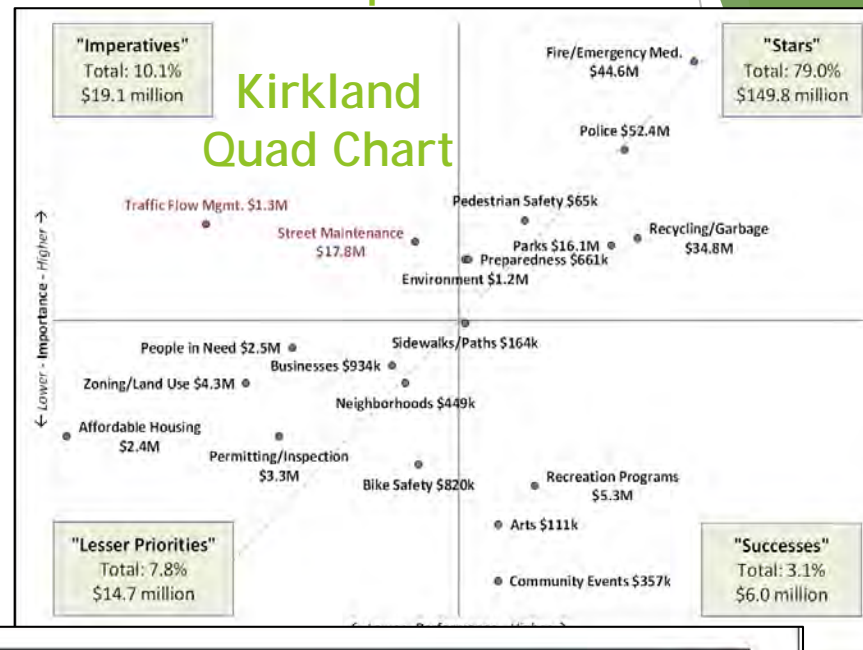
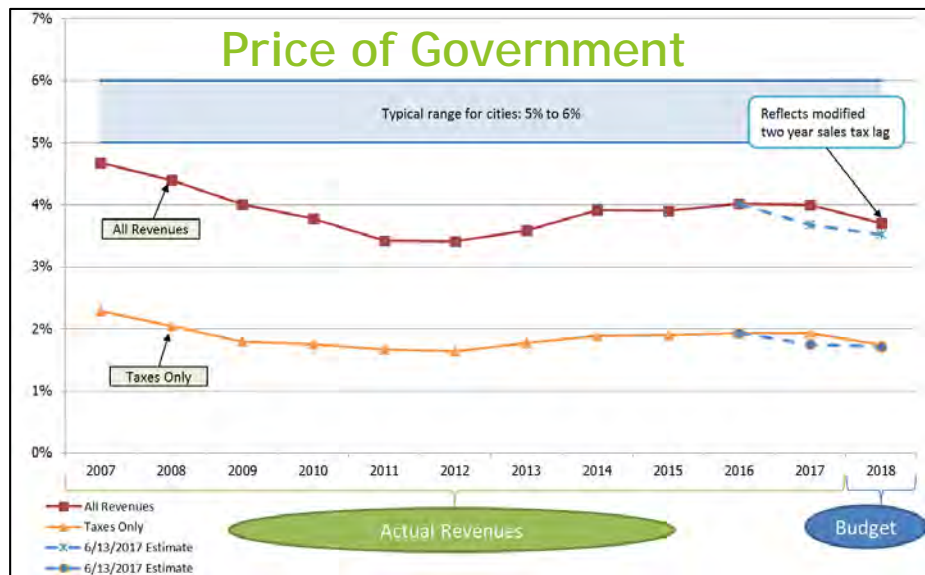
Looking southeast



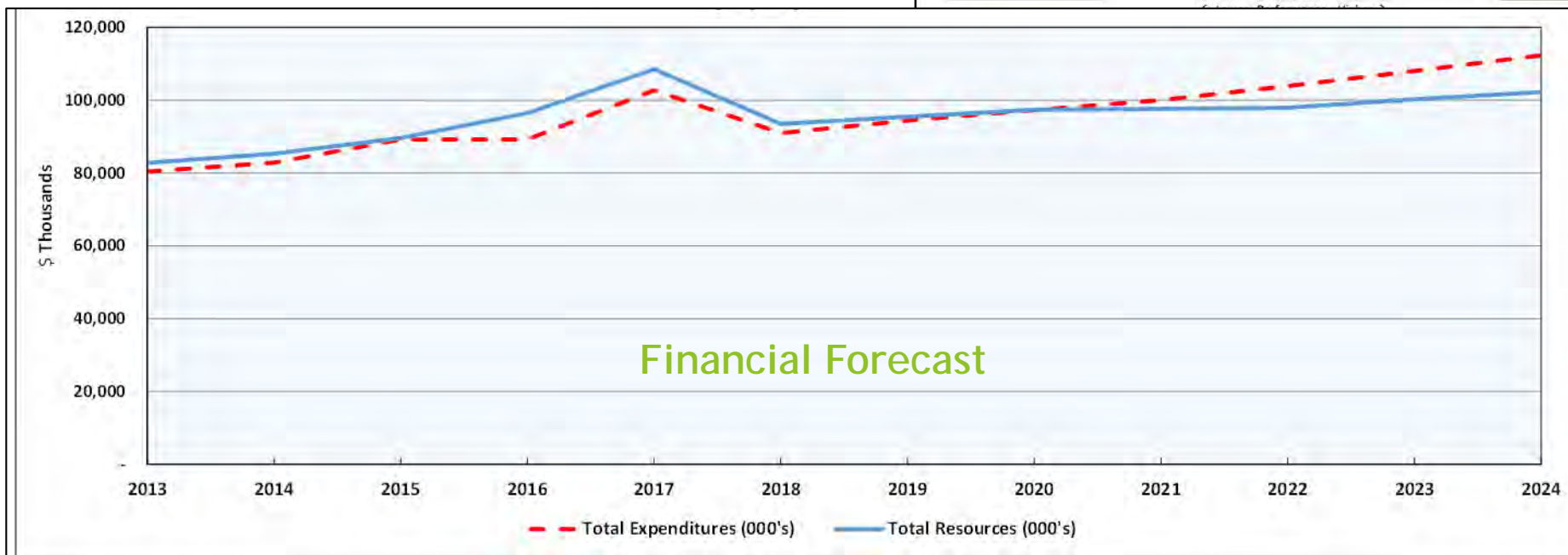
Balanced Strategic Anchors

Affordable

Responsive

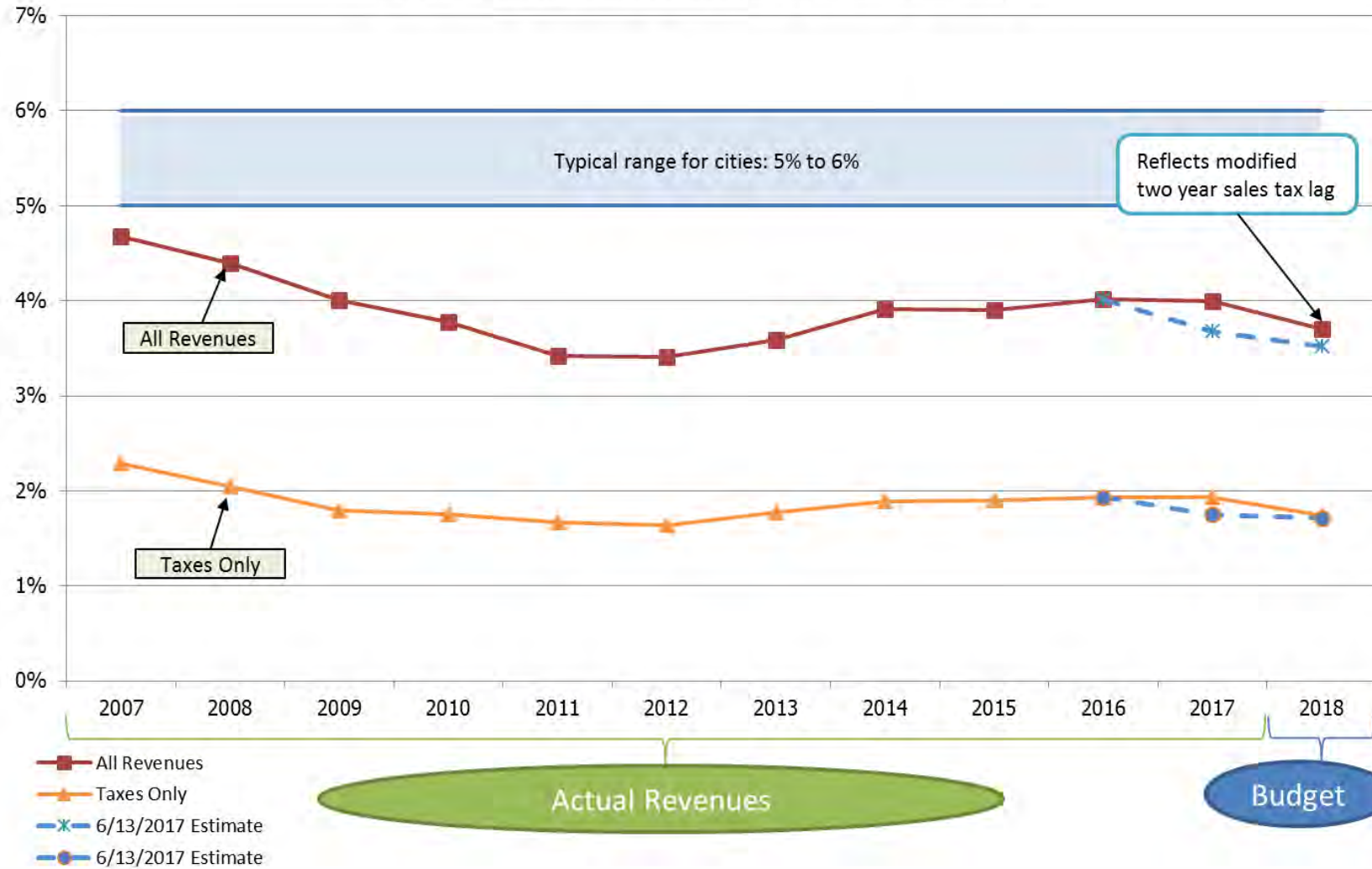


Sustainable



Responsive Services, Responsible Tax Levels

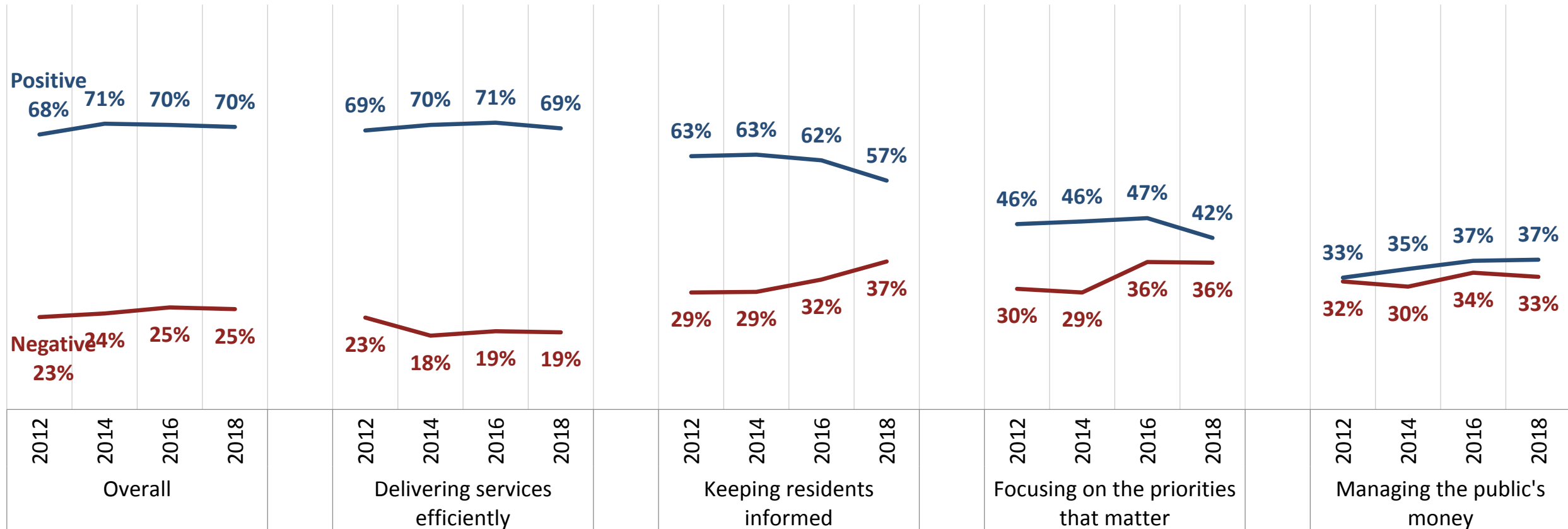
The Price of Government
City of Kirkland, Washington
(Revenue as a percent of Aggregate Personal Income)



City of Kirkland Job Ratings – Trend

Ratings for the job the City is doing overall, delivering services efficiently, and managing the public's money are unchanged. Ratings for keeping residents informed and focusing on the most important priorities have both slightly declined since 2016.

Positive: the combined total of “excellent” and “good” ratings
Negative: the combined total of “only fair” and “poor” ratings



Q8-12. Please tell me how you think Kirkland City government is doing in each of the following areas. Use a scale of excellent, good, only fair, or poor. If you aren't sure one way or the other, please just say so.

Importance

Most services are seen as important (“4” or “5”) by a majority of residents. More than three-quarters consider Fire/EMS (94%), police (86%), maintaining streets (81%), managing traffic flow (78%), pedestrian safety (78%), protecting the environment (78%), and recycling/garbage (78%), and city parks (77%) to be important (4 or 5 out of 5).

	Mean Importance Ratings	Raw Change from 2016	Total 4+5
Fire and emergency medical services	4.68	+0.02	94%
Police services	4.43	+0.02	86%
Pedestrian safety	4.23	-0.01	78%
Managing traffic flow	4.22	+0.05	78%
Protecting our natural environment	4.19	+0.04	78%
Recycling and garbage collection	4.18	+0.10	78%
Maintaining streets	4.17	+0.03	81%
City parks	4.16	+0.03	77%
Emergency preparedness	4.12	+0.02	73%
Availability of sidewalks and walking paths	3.94	-0.09	67%
Services for people in need	3.87	-0.11	66%
Attracting and keeping businesses in Kirkland	3.82	-0.06	63%
Zoning and land use	3.77	+0.10	59%
Support for neighborhoods	3.77	-0.05	59%
Building, permitting and inspection	3.62	+0.13	53%
Affordable housing options for vulnerable residents*	3.62	--	57%
Bike safety	3.54	-0.01	52%
Recreation programs and classes	3.48	-0.01	49%
Support for arts in the community	3.37	-0.06	46%
Community events	3.21	-0.01	39%

Q13-32. I’m going to read you a list of services and functions provided by the city. For each one, please tell me how important that city function is to you and your household. Use a scale of 1 to 5, where 1 means that it is “not at all important” and 5 means it is “extremely important.”

* New item added to 2018 survey.

Performance

Fire and EMS services (87% A or B), recycling (86%), police services (83%), and city parks (83%) remain the top-rated City services. Affordable housing options for vulnerable residents and managing traffic flow are the lowest rated services.

Mean Performance Ratings

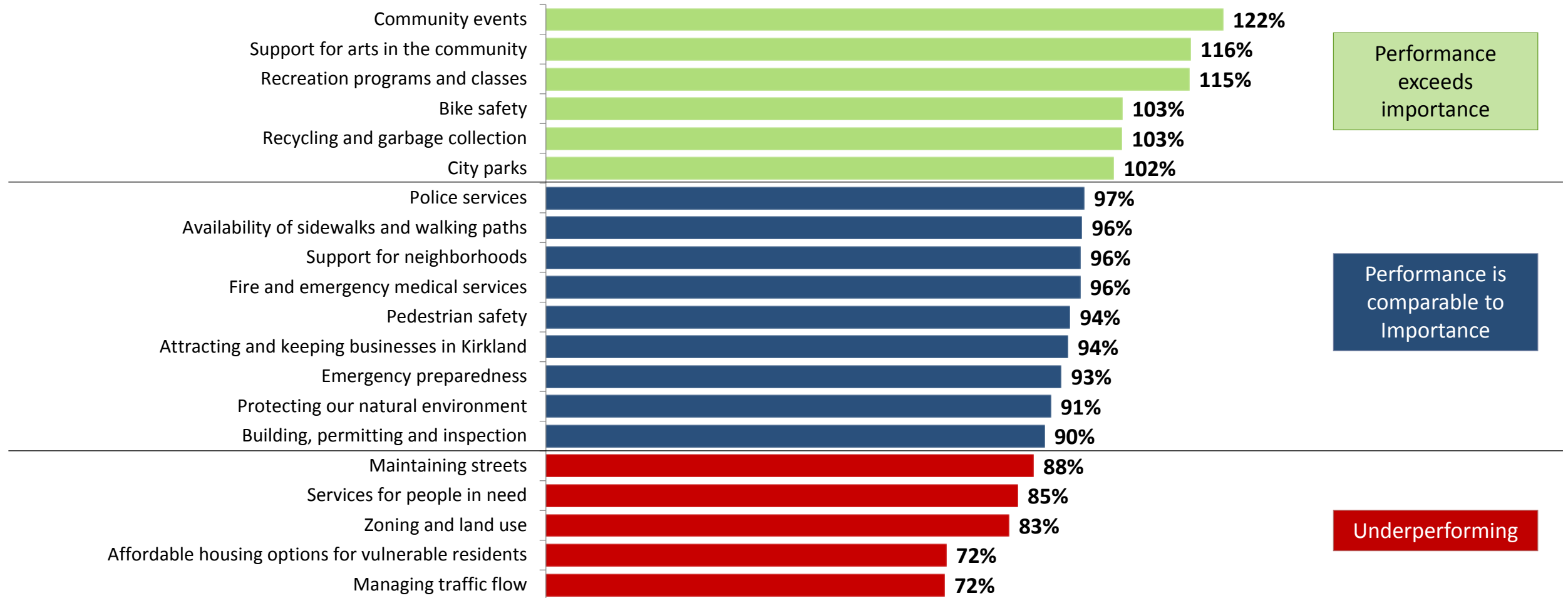
		<u>Raw Change</u> <u>from 2016</u>	<u>Total</u> <u>A+B</u>
Fire and emergency medical services	4.49	+0.12	87%
Recycling and garbage collection	4.32	+0.02	86%
Police services	4.28	+0.13	83%
City parks	4.24	+0.13	83%
Recreation programs and classes	4.01	+0.10	65%
Pedestrian safety	3.98	+0.06	73%
Support for arts in the community	3.90	+0.08	64%
Community events	3.90	+0.02	63%
Emergency preparedness	3.81	+0.04	52%
Availability of sidewalks and walking paths	3.80	+0.09	64%
Protecting our natural environment	3.80	-0.07	64%
Bike safety	3.66	-0.00	54%
Maintaining streets	3.65	+0.01	62%
Support for neighborhoods	3.62	-0.02	49%
Attracting and keeping businesses in Kirkland	3.58	+0.12	51%
Services for people in need	3.28	-0.31	30%
Building, permitting and inspection	3.24	-0.13	34%
Zoning and land use	3.14	-0.07	33%
Managing traffic flow	3.02	-0.13	35%
Affordable housing options for vulnerable residents*	2.60	--	16%

* New item added to 2018 survey.

Q33-52. Using the same list, please tell me how well you think the city is doing in each area. Use an A through F grading scale where A means Excellent, B means Above Average, C is Average, D is Below Average, and F is Failing.

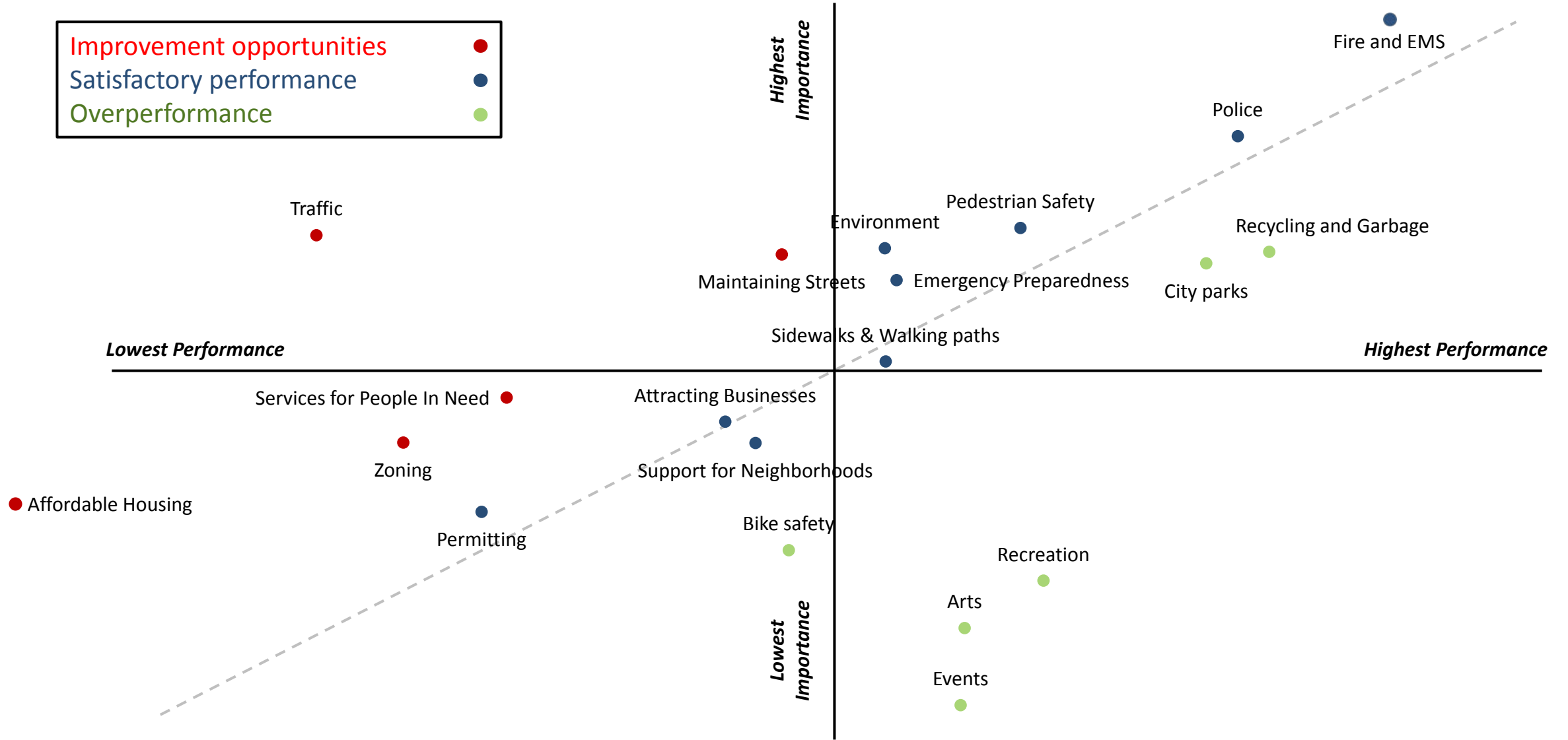
Gap Analysis: Performance as Percentage of Importance

Of the City services tested, most are rated at least comparably to their relative performance, with the exception of managing traffic flow (its performance mean was 72% of its importance mean), affordable housing options (72%), zoning and land use (83%), and services for people in need (85%). Conversely, community events (122%), support for arts (116%), and recreation programs (115%) are the biggest overperformers.

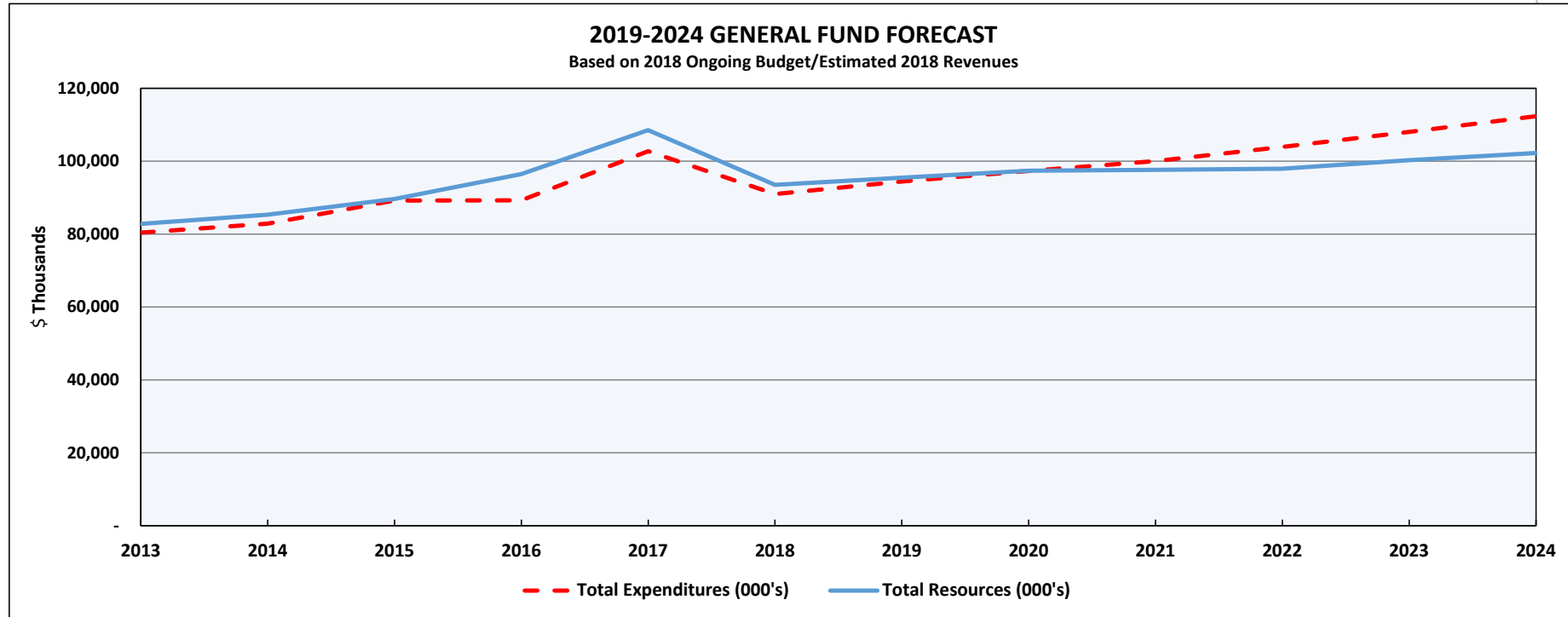


Quadrant Chart

Improvement opportunities	●
Satisfactory performance	●
Overperformance	●



Sustainable Services, Sustainable Revenue

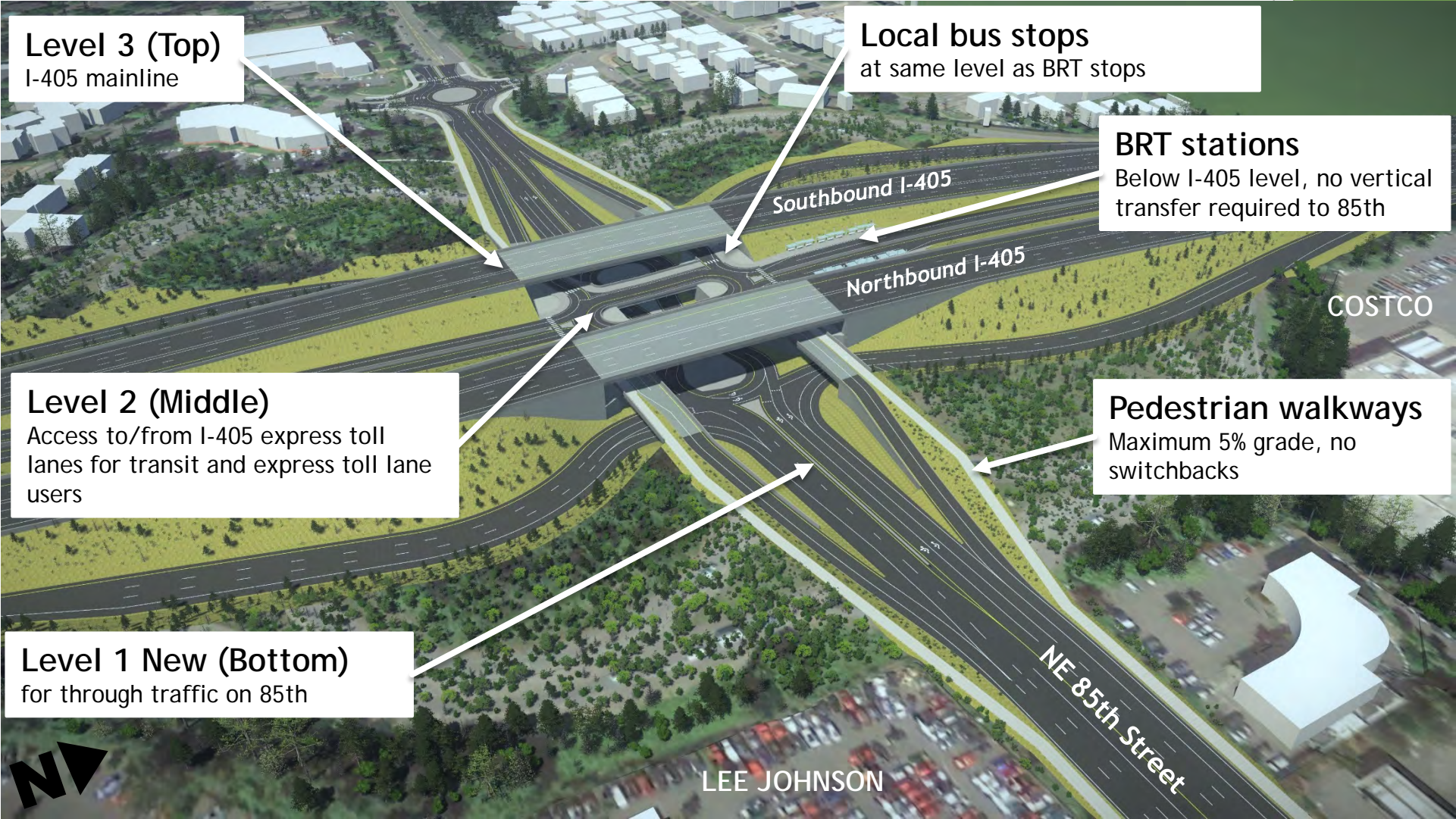


	2013	2014	2015	2016	2017	2018	2019	2020	2021	2022	2023	2024
Total Expenditures (000's)	80,419	82,884	89,203	89,251	102,740	90,988	94,449	97,302	100,006	103,938	108,056	112,361
Total Resources (000's)	82,804	85,338	89,662	96,451	108,527	93,494	95,478	97,405	97,636	97,921	100,266	102,272
Net Resources (000's)	2,385	2,454	459	7,200	5,787	2,506	1,029	103	(2,370)	(6,017)	(7,790)	(10,089)
Less Developmnt Rev>Budget					(1,600)	-	-	-	-	-	-	-
Adjustment to Reserves/NY RF		(4,838)		(7,659)	-	-	-	-	-	-	-	-
Biennium Total (000's)		0		0		6,693		1,132		(8,387)		(17,879)

Preliminary Council Budget Priorities

- I. Retain AAA credit rating, healthy reserves and strong financial policies
- II. Keep City government running well
- III. Invest where City is not meeting expectations
 1. Transportation and Traffic
 2. Homelessness
 3. Housing Affordability
- IV. Sustain top performers that are most important
 1. Parks, Recreation and Open Space
 2. Police and Fire/Emergency Medical Services

Transportation/Traffic Investments



Transportation/Traffic Investments Separated Transit Interchange Concept



Traffic Investments: Transit! ACES? Aerials?

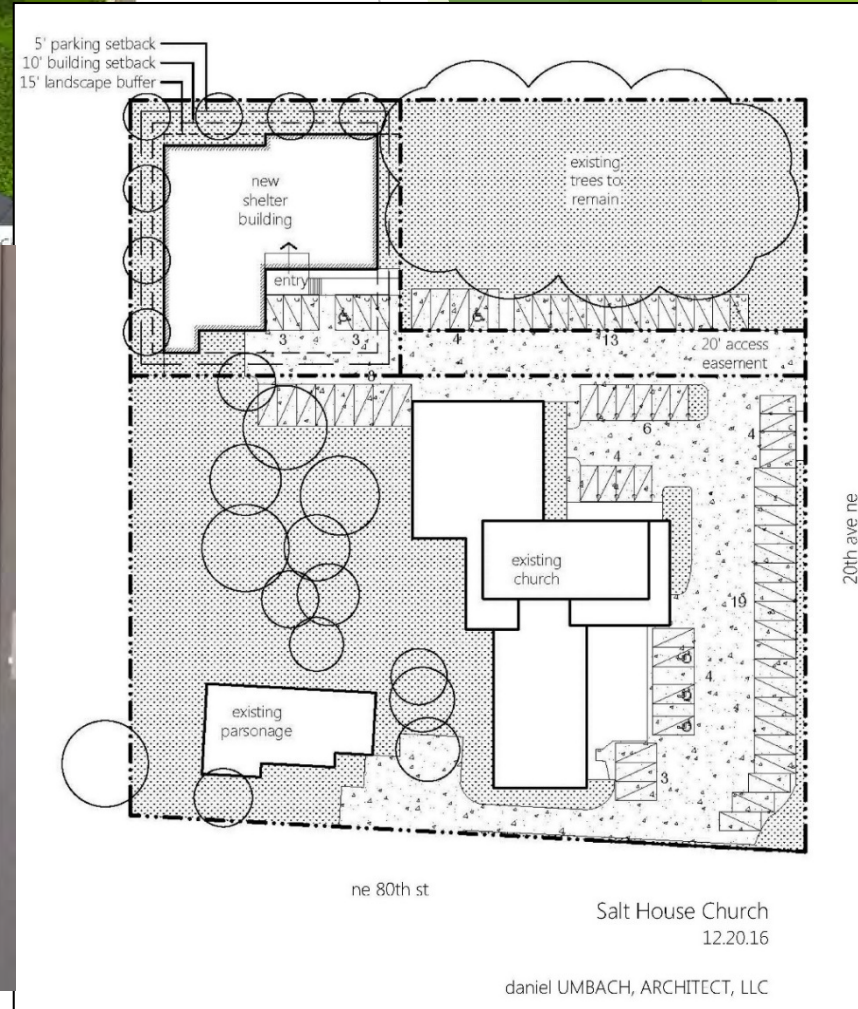


Transportation/Traffic Investments

Trails, Transit, Sidewalks, Bike Lanes



Women and Family Shelter



Creating Affordable Housing Options

Accessory Dwelling Units



Zero Lot Line



Dedicated Housing



Mixed-Use Set Asides



Preserve Ramblers



New Parks, Recreation and Open Space



Juanita Heights Park Expansion Richter Property



10.23 acres Juanita Heights Park (Current)
0.50 acres Proposed Richter Property Acquisition
 10.73 acres Juanita Heights Park (New Total)

- Existing Park
- This Acquisition
- Potential Future Acquisitions
- Unopened City Right-of-Way



New Turf Fields?



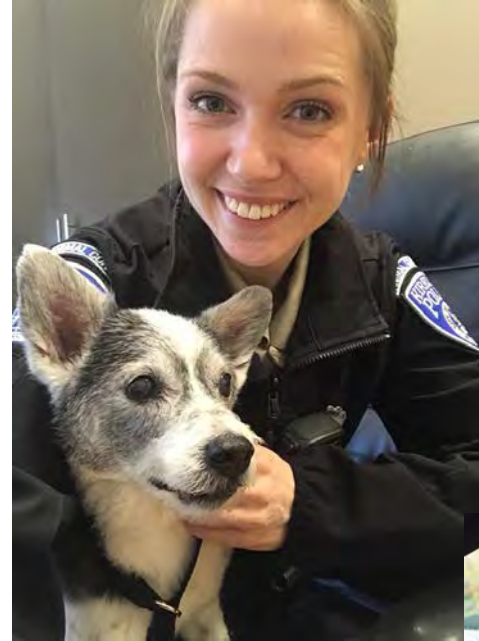
Josten Park Dedication

Fire and Police Strategic Plan Implementation

Fire/EMS: Improved Response Times
(Staffing, Stations)



Police: Community Policing
(ProAct, Patrol)



Gun Safety and Community Safety



Community Safety Ballot Measures

2018 Police and Community Safety

2020 Fire/EMS Staffing and Station Renovation/Enhancement

ENHANCED SAFETY For a Thriving City



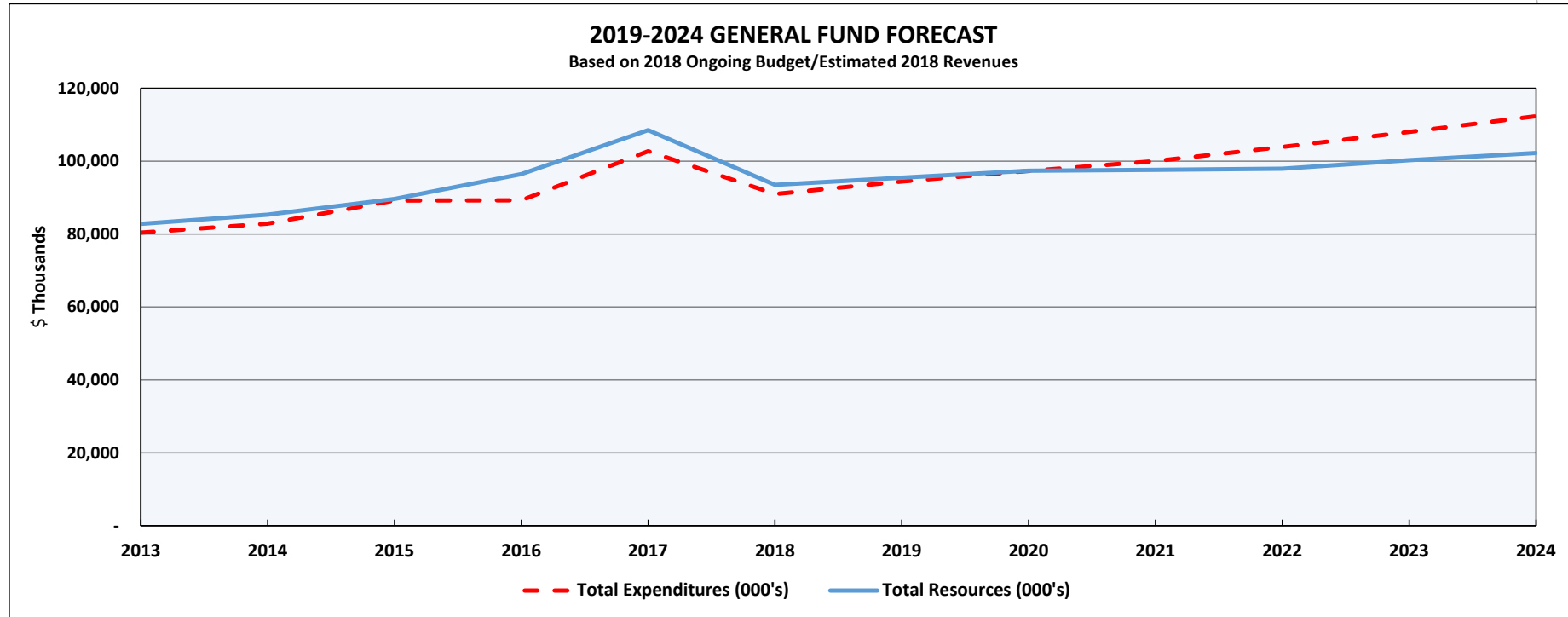
Questions? Feedback?

What would you prioritize in the 2019-2020 Budget?

What are your thoughts on the two-phased community safety ballot measure concept?

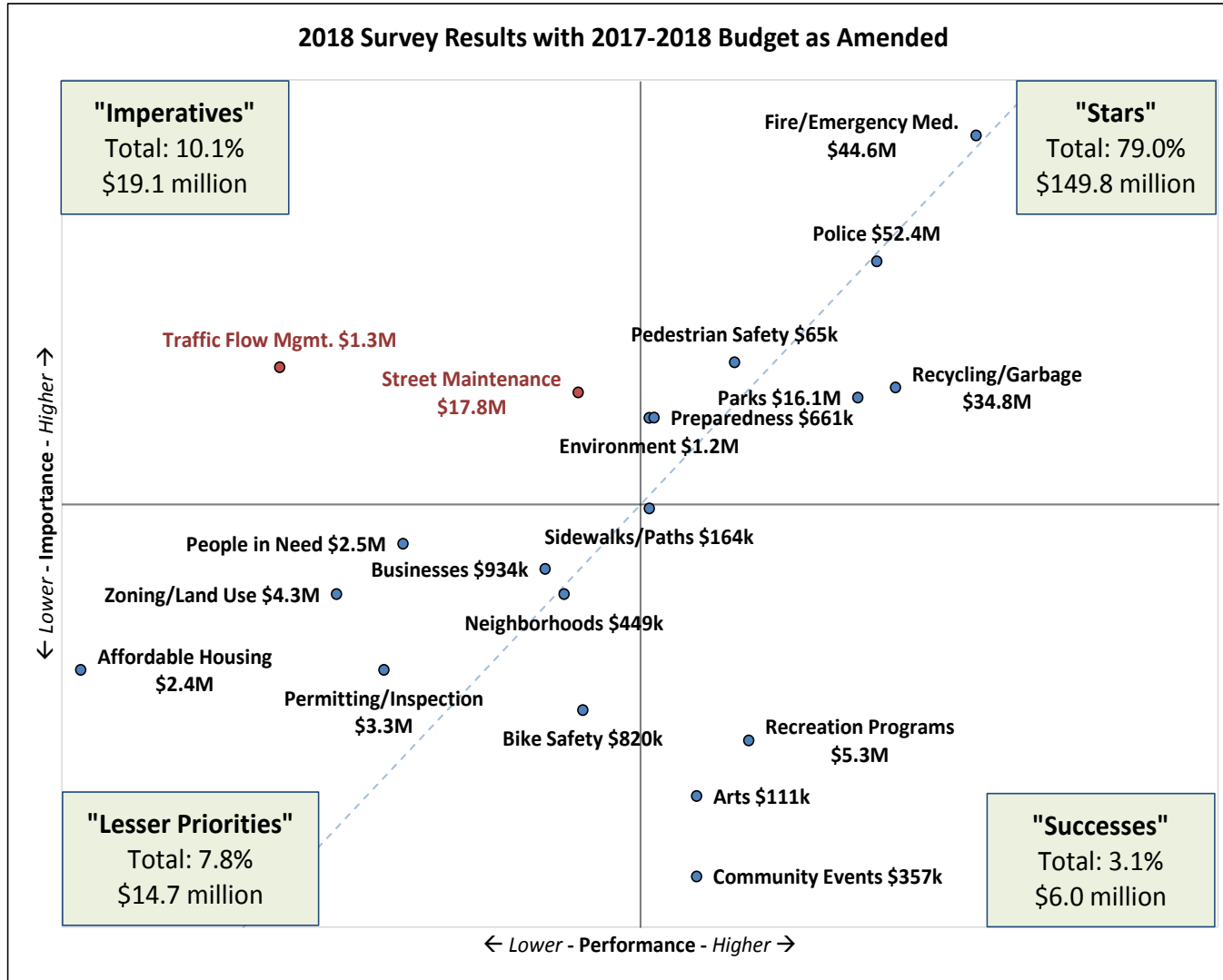
What else would you like to tell us?

Sustainable Services, Sustainable Revenue



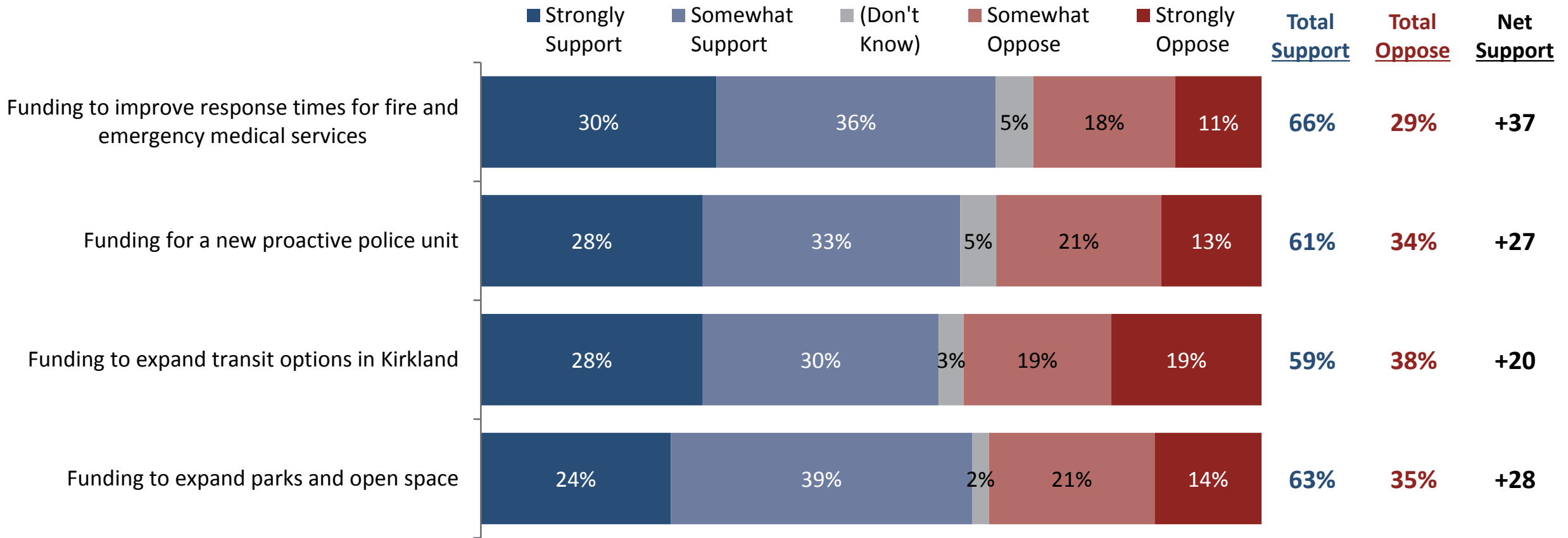
	2013	2014	2015	2016	2017	2018	2019	2020	2021	2022	2023	2024
Total Expenditures (000's)	80,419	82,884	89,203	89,251	102,740	90,988	94,449	97,302	100,006	103,938	108,056	112,361
Total Resources (000's)	82,804	85,338	89,662	96,451	108,527	93,494	95,478	97,405	97,636	97,921	100,266	102,272
Net Resources (000's)	2,385	2,454	459	7,200	5,787	2,506	1,029	103	(2,370)	(6,017)	(7,790)	(10,089)
Less Developmnt Rev>Budget					(1,600)	-	-	-	-	-	-	-
Adjustment to Reserves/NY RF		(4,838)		(7,659)	-	-	-	-	-	-	-	-
Biennium Total (000's)		0		0		6,693		1,132		(8,387)		(17,879)

2018 Survey Results with 2017-2018 Budget as Amended



Potential Funding Increase Areas

All four potential funding increases – fire/EMS, parks, police, and transit – receive majority support, however intensity of support (“strongly support”) is low, and because these were not actual ballot tests with specific tax increase amounts, they reflect general funding priorities rather than potential support at the ballot box.



Q62-65. Next I am going to read a list of services that some Kirkland citizens feel need to be improved. Each of these would require a tax or fee increase to provide the necessary funding. As I read each one, tell me whether you would support or oppose increasing local taxes or fees for that purpose. Tell me whether you strongly support, somewhat support, somewhat oppose or strongly oppose each one.