

Minutes, Kirkland Alliance of Neighborhoods
November 10, 2021 Virtual online meeting

Note: Action items are highlighted in **yellow**.

Neighborhoods attending:

Central Houghton	Lisa McConnell
Everest	Anna Aubrey
Evergreen Hill	Johanna Palmer
Finn Hill	Bill Blanchard (KAN Chair) (start of meeting only)
Highlands	Debbie Ohman, Karen Story
Juanita Neighborhoods	Leo Gilbert
Lakeview	Mark Still
Market	Liz Hunt, Mark Nelson
Moss Bay	Bea Nahon
Norkirk	Janet Pruitt, Jane Ainbinder
North Rose Hill	
South Rose Hill/Bridle Trails	Chris Kagen

City Staff/Elected Officials attending:

- David Wolbrecht, Senior Neighborhood Services Coordinator
- Jon Pascal, Councilmember

Guests:

- Jeanne Large, Moss Bay
- Jim McElwee, SRH/BT
- Judith Beto, Lakeview
- Heidi Schor & Daniel Winkler, Juanita
- Susan Vossler, Finn Hill
- Martin Morgan, SRH

7:04pm Introduction

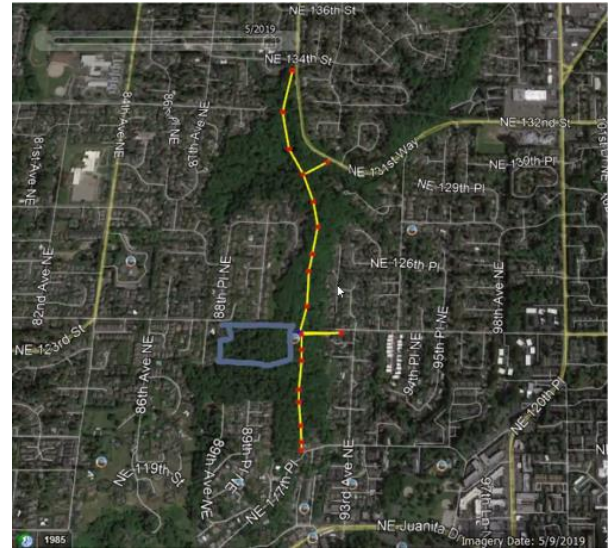
- Chair Bill Blanchard called the meeting to order
- Bill has to excuse himself tonight; David chairing the meeting

7:05pm Public comments

- None
- Round-the-horn introductions

7:08pm Juanita Heights Access and Community Trail

- Heidi Schor & Daniel Winkler presenting
- North Juanita Heights Forest Connector Trail
 - Objective: provide park and trail access through a green belt running uphill from Juanita to Finn Hill
 - Actual access to Juanita Heights Park (blue square on the map) from Juanita (can't actually get to this Finn Hill park easily from Juanita!)
 - Continuation of NE 124th St. up the slope to access Finn Hill for pedestrians and bikers (a City map shows an easement)
- Walking/biking up NE 131st Way is really unpleasant, and that's the most likely way for Juanita people to reach Finn Hill green spaces
- What can KAN do?
 - Other groups are working on green space initiatives
 - This area does not meet the City standard of park access (within ¼ mile)
 - **Need to amplify our voices, and KAN people know how to do that**
- Safe Routes To School program (Anna)
 - Try getting this route on the list
 - Intended for routes students would take for getting to school
 - But looking at the other route proposals might give you ideas
- Legal access (Bea)
 - Your map shows some access points; do you know that they're legal access points? And will the public have enough access points to use this trail?
 - Heidi: No, we don't know; this is just our citizen proposal. Need the City to tell us what's legal. Every day that we wait means that more tracts are built and it'll get harder to create this.
- (Lisa) Ask Finn Hill Neighborhood Association about the [Green Loop](#) project. And find out who your Parks Board representative is.
- (Jon) I own one of the parcels. This is a great idea. We're already working on other trails in the area, such as the Green Loop. NE 131st Way: We're planning on making improvements (under Complete Streets funding, if it comes through) for ped and bike access, as well as stormwater management. Call me to discuss more.
- (Leo) Want to make sure there are follow-ups for this conversation. Talking more to Jon is a good start.
 - **(David) Email me the PPT and I'll track down who's best to follow up with on City staff.** Definitely an interesting fit with the FHNA Green Loop project.
 - (Jon) We have budget next year (Parks CIP) to fund the Green Loop plan.



- (Mark) Has this made its way into the Neighborhood Plan?
 - (Heidi) We understand it was brought up 10 years ago and didn't make it into the plan then. The plan is due for renewal next year, and we'll make sure this makes it in.

7:33pm Vehicle emission reduction through idle awareness

- Susan, Jeanne, and Judi presenting
- This topic arose through work on the Sustainability Master Plan
- Goal:
 - Decrease greenhouse gas emissions
 - Make a healthier city
- “Turn It Off” toolkit
 - [Link](#) emailed before meeting by Bill
 - Promote turning off your car if idling for more than 10 seconds
- Public education
 - Judi showed a brochure and described handing it out at common locations (e.g., parents idling in cars at school dropoff/pickup)
- (Anna) Re: school idling: How about hitting all of the K-12 PTSAs?
 - (Susan) That's on our plan
- (Mark) Is there data about how idling does not hurt your car?
 - See the Turn It Off toolkit
 - (Leo) I've heard that 7 seconds is the magic number ...
 - (Susan) And, of course, there are exceptions where people need to idle
- (Jeanne) Need to give people good, up-to-date data, which the toolkit provides
 - Also, need to have the conversation in a positive way, emphasize the benefits
- (Lisa) Pasted a link to the [LWSD sustainability program](#)
 - (Susan) Yes, kids are great carriers of the message! We're working with the PTSA sustainability representatives and others.
 - Also suggested adding an idling component to the Driver's Education curriculum, which they are considering
- KAN action
 - David will email the flyers to all
 - Share them with others; print them and hand them out; spread the word



7:48pm 85th St. Station Area Plan working group update

- Liz Hunt presenting
- Latest activities
 - Oct 26: City Council study session
 - [718pp packet](#)
 - See the first 10pp (summary) and ...

- The last 6pp (letters from Mayor Sweet and Google)
 - Central question: Is the plan financially feasible? Determinations:
 - YES, with June Alternative B
 - Alternative A leads to a \$137M capital deficit
 - Need more funding options (TIF, more fees, use reserves)
 - Preferred plan direction: forge ahead with June Alternative B
 - Nov 01 Community Q&A
 - Excellent public comments/questions
 - RESPONSES from consultants and city staff
 - Recorded, but not yet posted
 - Nov 08 Kurt Triplett at KAN Station Area Plan working group meeting
 - Excellent discussion
 - Good insights into what the City is trying to achieve with this project
 - City learned a lot from Totem Lake and Juanita developments
 - How to get more of the results that we want out of development, rather than what will happen if you let the market drive development
- Next steps
 - 11/16: Joint study session, Council and Planning Commission
 - 12/14: City Council meeting: officially decide preferred plan direction?
 - Planned Action Ordinance (PAO): pushed from Dec '21 to Q1 2022
 - 2022: further definition, create new zoning, etc.
- KAN working group
 - Bill, Liz, Ken are the core; others float through
 - **What does your neighborhood think of this plan?**
- (Mark) \$35M tagged as developer incentives under Plan B. Why not equal incentives for both plans?
 - (Liz) It has to do with building heights and the leverage you have with the developers. “Bonus height” gets the City more stuff from developers.
 - (Mark) I’ve asked the Lakeview neighborhood about this and haven’t heard anything back.
- (Lisa) Schedule: with PAO pushed back, does that move final adoption back from April 2022?
 - (Liz) Schedule still calls for final determination Jan-Mar 2022.
 - (Lisa) I’ve written much communication to Allison Zike and Council, and so have other fervent people in Houghton. Our primary focus is getting information out to the people. The major issue in our neighborhood is not about the jobs or the housing, but simply about the scope. 250’ is very high!
 - (Liz) I’ve tried to encourage different naming, to encourage engagement. A mailer with “Station Area Plan” is likely to just go in the recycling.
 - (Lisa) The Transportation Commission is commonly not involved early enough in these sorts of projects, despite the impact on traffic and transportation.

- (Janet) The impact seems to land more in individual conversations than in group discussions. Pictures that demonstrate the scope certainly help. What height is being considered now?
 - (Liz) At the Lee Johnson lot, the maximum is 250'. It varies throughout the area.
 - (Janet) Transit oriented development is good for affordable housing, but I don't see much emphasis on affordable housing here.
 - Do we want to convince people in our neighborhood to build big? I think people would rather see moderation. There's a lot of emphasis on what we will gain from a larger build like Plan B, perhaps too much emphasis.
 - (Jane) Rodney Rutherford will speak at Norkirk mtg about the "Strong Towns" initiative
 - (Liz) I asked about affordable housing at the first Q&A session. How does affordable housing pencil out here? The answers were light. There's a "commercial linkage" component that generates funds from businesses to fund housing. About building big: We need to learn more about the tradeoffs and how the process works. Finally, I think it's fabulous to have people come speak at your NA meetings. (Lisa dropped a link to the [Moss Bay mtg](#) where Lee Johnson and Google both attended.)
- (Karen) People are confused about the distinction between the Station Area Plan and the actual freeway interchange, which are separate projects. The Google proposal is yet another distinct thing. The city website is confusing.
 - People need to see actual drawings to understand the scope and impact, and no one is providing them yet.
 - Because the ground is sloped, Google is insisting on 250' and saying that they don't need to build completely to that height—but if you only need 180', then let's set it at 180'. If they get 250', what's to prevent them from building that high?
 - Highlands people do not want to be the next Bellevue, don't want buildings this high. We have about 80% communication coverage, between email and NextDoor.
 - Impression: Kirkland is selling its soul to developers, with all of the "amenities" bargaining.
 - People I've talked to have a sense that their input will make no difference, and the city has already made their decision.
 - There is strong skepticism that the SAP zoning will get us any real affordable housing benefits.
 - Most people I talk to are OK with higher density, but not 250' buildings!
 - Whatever decision is made about the Google property will set a precedent for the rest of the SAP.
- (Martin) I'm trying to get the SRH/BT board (I'm on the board, and I live on 122nd Ave. NE, near the area) to take a position, and at least one person does not want the board to take a position.
 - Interested in how the dense development transitions into the surrounding neighborhood.

- (Liz) Planning Commission discussed that a lot at their study session (July?) and I haven't seen the impact of that discussion. Send your input to the Planning Commission and the Council to urge them to discuss it at their next study session on Nov 16th.
- (Martin) I'm in favor of growth if it's done well. I want the SRH/BT NA to get involved.
- (Anna) Everest neighbors sent in a boatload of letters. We just finished our Neighborhood Plan Update with not a lot of impact; the Sierra Building lot will be allowed more height and footprint, but that's about it.
 - We hear that Sound Transit has money problems and keeps pushing out the bus rapid transit (BRT) plan. So why is Kirkland rushing their own plans?
 - (Liz) The BRT was only pushed back one year.
- (Johanna, in chat) The Evergreen Hill NA has not had any chatter at all on this project. There is more interest in the new on/off ramps at NE 132nd St.
- (Bea) Diverse opinions in the Moss Bay neighborhood. The letter from Google bothered me, with the resistance to ground-floor retail. We had them at our mtg last Monday and what we heard was very non-specific. We should emphasize what we do want, rather than what we don't want. How do we build a space where we want to live and visit?
- (Heidi) I worked on this master plan 20 years ago. There's no commercial zoning left on this Alternative B, and that's not what we projected. Who's asking for this to be developed, to begin with? If it's the residents, then that's different than developers asking. This does not resemble the plan we originally made for the 85th Street corridor.

8:37pm Roundtable

- Houghton (Lisa)
 - Houghton Community Council was reconfirmed by recent vote
 - 11/22 Joint mtg with City Council about sunseting the Houghton Community Council, despite the recent vote
 - Fire Station 22 remodel is coming up
- Market (Liz)
 - Halloween was great! Over 100 kids at our door
 - Holiday events coming: house decorating contest, maybe some caroling, etc.
 - Shout out to City for reflective markers added to the lanes on Market St.
- Everest (Anna)
 - **Holiday donation drive for Eastside Baby Corner: drop off at Menchie's**
- Lakeview (Mark)
 - City Council is really trying to sunset the Houghton Community Council, including asking the State legislature to intervene—despite a 76% positive vote for the Council. City government is disconnected from the people.
- Highlands (Karen)
 - Karen stepping down as chair after 16 years; Debbie Ohman also stepping down as KAN rep, too. New chair is selected, but no new KAN rep yet.

- Moss Bay (Bea)
 - Had Google at the last meeting
 - Neighborhood Plan Update going well, expecting the City Council to take action at the December meeting
 - Follow-up comment to Mark's comments: Jon Pascal moved to remove Houghton Community Council sunseting from the State legislative priority list until after the two bodies could meet to discuss further, and his motion passed 6-1, with the one dissenting vote relating solely to the order of events.
- SRH/BT (Chris)
 - Had a NA mtg last night with citizen response to the Lee Johnson development proposal, sparking some lively discussions
 - NERTS (Houghton Transfer Station) deliberations are quiet right now. It's clear that the County really wants to redevelop the station at its current site.
 - Tech City Bowl site is pushing for 5-story development while the owners talk about their deep neighborhood roots.
 - All in all, SRH/BT is feeling a bit railroaded right now.
- Norkirk (Jane)
 - Had a recent coffee meet-and-greet that went well
 - Planning our next neighborhood meeting, including the Strong Towns conversation
 - Sidewalk connectivity is a big topic for our Neighborhood Safety Project push this year
 - No clear picture of what the neighborhood residents think of the 85th Station Area plan; diverse opinions
- Evergreen (Johanna)
 - Grateful that the 132nd Square Park workers were able to leave the playground open as long as possible
 - The 132nd St. on/off-ramps at 405 are a big topic; some people love roundabouts, some people hate them, and some people say Washingtonians don't know how to drive through them
- Juanita (Leo)
 - Headed into the Neighborhood Plan Update process
 - Reviewed Neighborhood Safety Projects at last meeting; front-runners include extending bike lanes onto 116th Ave.

8:54pm Neighborhood Services update

- David Wolbrecht presenting
- Neighborhood Safety Projects underway
- David is the new Communications Program Manager
 - Starting that role next week
 - In new role, he will no longer be attending KAN, nor be point person for neighborhood associations
 - City will be starting a hiring process soon

- Let David know if you know of anyone who might be interested, and he can share the job posting when it's published
- (Karen) Can KAN leadership be involved in the selection process?
- (David) That's not common, but we'll look into it
- David will continue KAN/NA support for the interim
- (General congratulations and appreciation)

9:00pm Closing

- Should we hold a December meeting?
 - General vote by thumbs up/down: NO
 - Bea: Perhaps we should make it a maybe, if there are significant developments with the 85th Station Area plan?
 - Chris: Let's shuttle that advisement to Bill. Perhaps it's a maybe for meeting as a group or for distributing information by email.
- Adjourned at 9:00pm EXACTLY (David rocks)
- Next meeting: Jan 12, 2022